

PART OF THE SE 1/4, OF THE NE 1/4, SEC. 27, T.6N., R.3W., S.L.B. & M.  
**TALBOT SUBDIVISION**

IN WEBER COUNTY  
SCALE 1"=100'

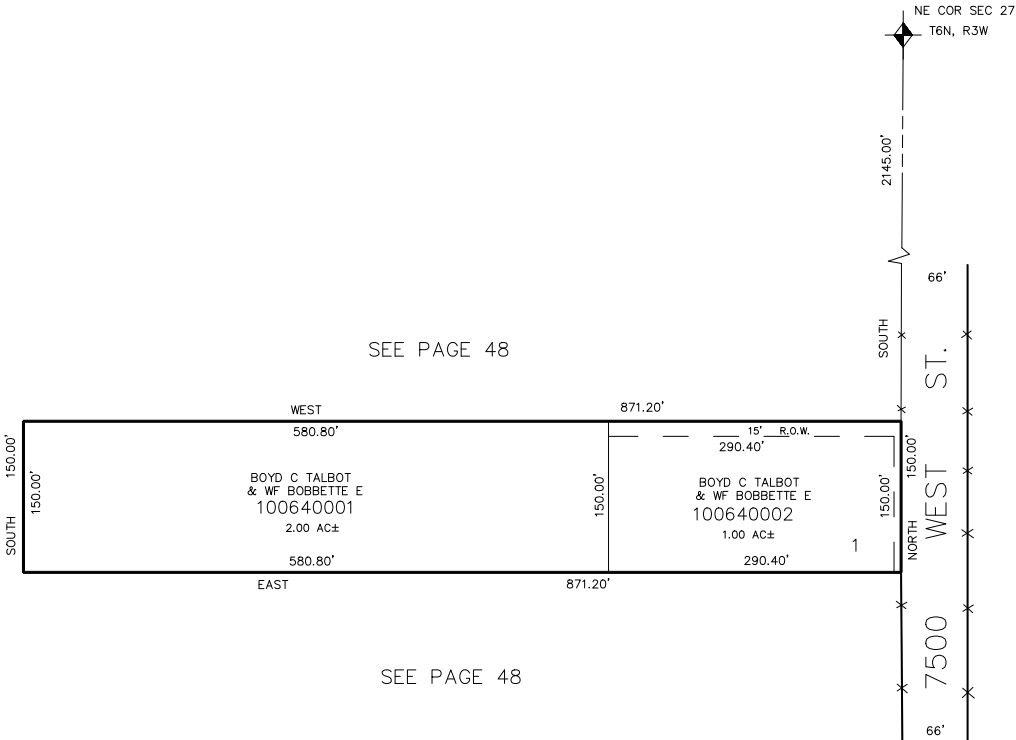
TAXING UNIT: 302

SEE PAGE 48

SEE PAGE 48

SEE PAGE 47

SEE PAGE 48



7' UTILITY & DRAINAGE EASEMENTS EACH  
SIDE OF PROPERTY LINES AS INDICATED  
BY DASHED LINES EXCEPT AS OTHERWISE  
SHOWN.

FOR COMPLETE ENG. DATA SEE  
ORIGINAL DEDICATION PLAT IN  
BOOK 28, PAGE 88 OF RECORDS.